

FAST/Acute Abdomen Phantom “FAST/ER FAN”

Focused Assessment with Sonography for Trauma

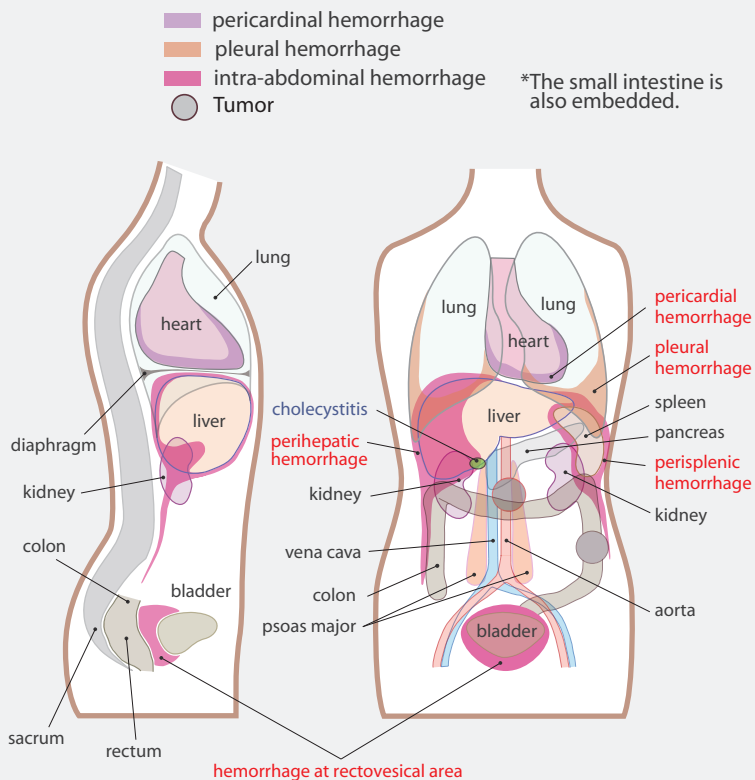
Features:

This innovative phantom facilitates repetitive training of FAST as an adjunct to the ATLS primary survey.

This phantom has been developed to provide simulated training in FAST (Focused Assessment with Sonography for Trauma) ; an ultrasound examination directed at identifying the presence of free intraperitoneal or pericardial fluid in the traumatic patients, which allows detecting the possible cause of shocks such as mass hemothorax, intraperitoneal hemorrhage or cardiac tamponade.

Training items:

- FAST procedures:
Internal hemorrhage at perihepatic, perisplenic, pelvis and pericardium area.
- Sonography for acute patients:
Internal hemorrhage at pericardial, bilateral chambers as well as intra-abdominal hemorrhage around the liver, the spleen and the urinary bladder.
Pathologies including cholecystitis, an aortic aneurysm, a lesion on the colon.



Production Supervision:

Junji Machi, MD, PhD

Professor of Surgery, University of Hawaii at Manoa

FAST and Acute Abdomen Pathology



① Cardiac tamponade



② Right upper abdominal bleeding



③ Left upper abdominal bleeding



④ Pelvic bleeding



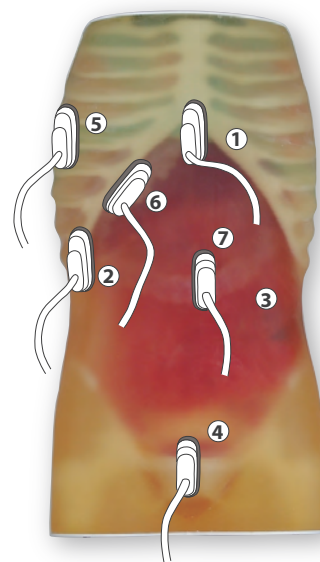
⑤ Pleural bleeding



⑥ Peri-hepatic bleeding



⑦ Abdominal aortic aneurysm



Set includes:

Ultrasound phantom with carrying base—— 1 unit

Materials:

soft tissue and organs: Urethane base resin (SZ-50)

synthetic bones: Epoxy base resin

size: approx. 40 x 80 x 31 cm

weight: approx. 35 kg



KYOTO KAGAKU

www.kyotokagaku.com

rw-kyoto@kyotokagaku.co.jp

Head Office and Factories:

15 Kitanechoya-cho, Fushimi-ku, Kyoto, 612-8388, JAPAN

Tel: +81-75-605-2510 Fax: +81-75-605-2519

USA Office:

3109 Lomita Boulevard, Torrance, CA 90505-5108, USA

Tel: 1-310-325-8860 Fax: 1-310-325-8867